

# Locality Planning Report

## December 2018

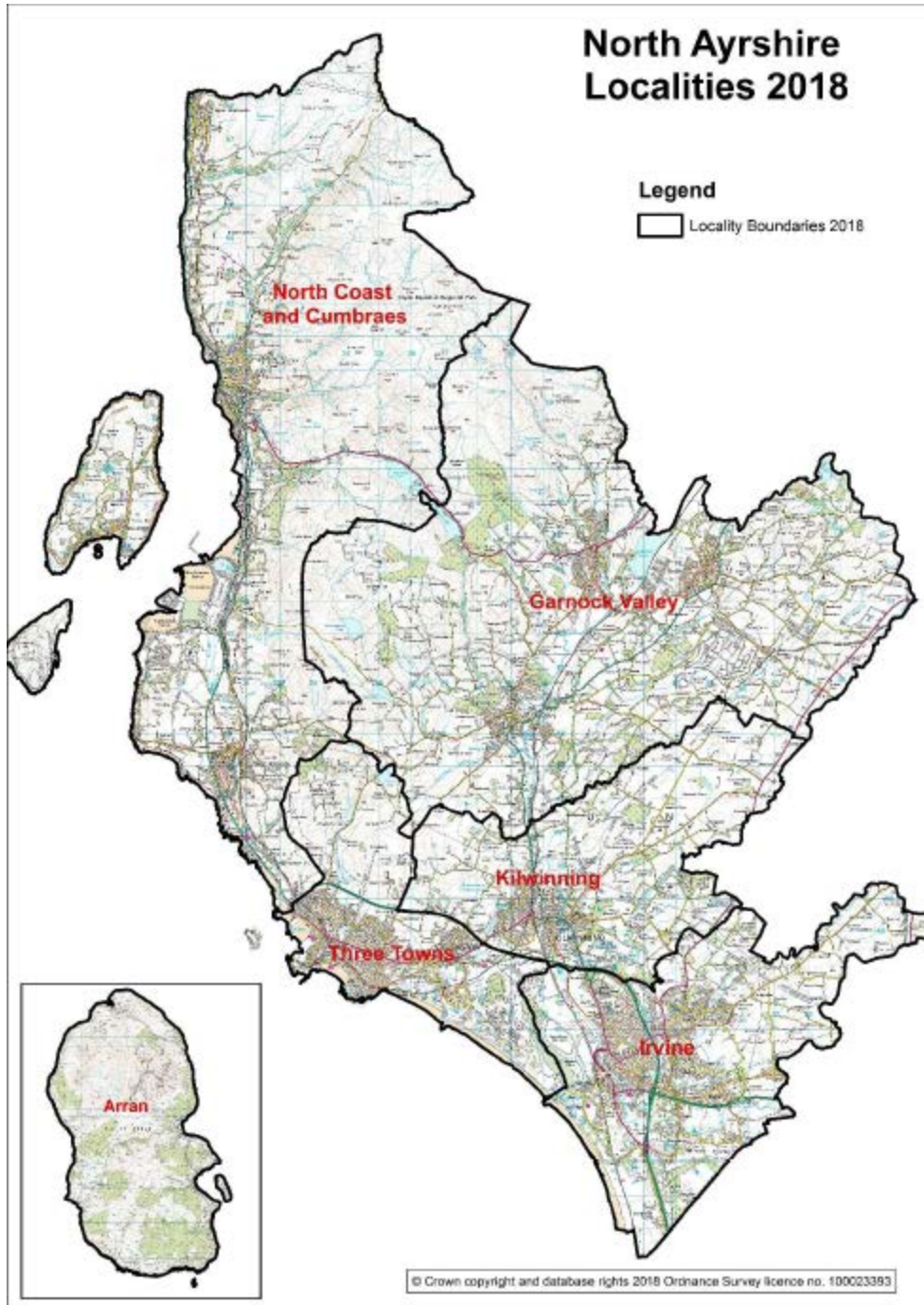


## Locality Planning Report December 2018

This report provides an overview of the Locality Planning approach in North Ayrshire and progress made to December 2018.

### Locality Partnerships

There are six Locality Partnerships in North Ayrshire which cover all of the local authority. These are shown in the map below:



The Community Planning (CP) Locality Partnerships (LPs) meet quarterly with interim working groups/workshops as required. Their remit focuses on a partnership approach to tackling local issues and inequalities. They are the means by which we fulfil duties under the Community Empowerment Act (Scotland) 2015 to have locality arrangements. The overall aim of locality planning is to harness the power of Community Planning Partners and communities to work together towards shared, data led, priorities. Their membership comprises:

- Elected Members
- Community representatives
- Community Council Chairs
- Community Planning partners.

Following consultation, use of the Place Standard and consideration of local statistical profiles the LPs have agreed local priorities. The Health and Social Care Partnership (HSCP) Locality Planning Forums have also decided on local issues to be addressed. The HSCP uses the same geographies as the CP LPs, and links between the two structures are in place.

The membership of each partnership along with their remit is available in the terms of reference.

<http://d1xcj1909sd1jp.cloudfront.net/wp-content/uploads/sites/60/2016/05/Locality-Partnership-Terms-of-Reference.pdf>

The minutes of their meetings are available on the Community Planning website. <http://www.northayrshire.community/your-community/>

They each have a locality plan which gives an overview of the profile of the area as well as detailing the priorities. An example is available here <http://northayrshire-community.wordpress.nexuswebdesign.co.uk/wp-content/uploads/sites/60/2017/09/170929-GV-Locality-Plan.pdf> .

These are supported by more detailed locality profiles, for example:

[http://d1xcj1909sd1jp.cloudfront.net/wp-content/uploads/sites/60/2018/02/Locality-Profile\\_GarnockValley\\_Final\\_Version\\_Sept2017.pdf](http://d1xcj1909sd1jp.cloudfront.net/wp-content/uploads/sites/60/2018/02/Locality-Profile_GarnockValley_Final_Version_Sept2017.pdf)

## Background to Development

Our approach to Locality Planning is rooted in engagement and consultation to devise the best approach for us to take locally. This is outlined in the diagram below.



## Support Mechanisms and Links to Wider CPP

The CPP agreed that to make this approach effective we needed to provide strong support from partners. Through the Locality Partnership Implementation Board and Locality Partnership Working Group issues are identified and resolved. Six monthly workshops are held to consider improvements and a programme of one to one interviews with the Senior Lead Officers has been undertaken. The Chairs of the Locality Partnerships also meet quarterly to consider issues across the localities. Support and training is offered to the members of the Locality Partnerships.

Partners have also aligned service provision to the locality areas. The North Ayrshire Council Locality Coordinators provide valuable support linking wider communities into the Locality Partnerships and supporting the working groups.

There are a variety of mechanisms to link the Locality Partnerships and the wider CPP. This works in both directions, with local issues and developments being fed from the localities into the Strategic Management Team of the CPP and the CPP Board as well as presentations and reports on strategic developments being taken to the localities. We use membership links to support this. The Senior Lead Officers on the LPs are members of the Strategic Management Team, and the LP Chairs are members of the CPP Board. The minutes of the Locality Partnerships are considered by the CPP Board.

## Locality Planning Progress in 2018

The LPs are now delivering on the local priorities using various mechanisms including:

- Working with those in communities who have expertise or experience in relation to the issue
- Research into approaches already underway locally and identifying what can be built upon
- Use of participatory budgeting to support communities to tackle local priorities
- Drawing up proposals with community groups and partners for use of the

Community Investment Fund, and making awards. Information on the CIF is available here:<http://d1xcj1909sd1jp.cloudfront.net/wpcontent/uploads/sites/60/2018/06/community-investment-fund-guidance-notes-17-12-17.pdf>

Also over 2018 at their meetings the Locality Partnerships have also been dealing with issues such as street naming and awarding grants.

Our Locality Conferences have received good feedback with attendees welcoming the opportunity to share experience with other locality areas.

As more Community Councils are established their Chairs are joining LPs, and additional members with relevant skills are being co-opted.

The Community Planning website is a growing central source of information about Locality Planning, partnership working, consultations and local events ([www.northayrshire.community](http://www.northayrshire.community)). The Locality Facebook pages are also updated on a regular basis and have an increasing profile.

More detail of the ongoing work of the Locality Partnerships is available in their meeting minutes, including. . .

### Irvine Locality Partnership

Community Engagement Plan for 2019 to create a better understanding of community assets, reduce duplication, provide opportunities, and raise awareness of internal and external funding, networking opportunities for groups, organisations and individuals, generating ideas to take forward for CIF proposals. These will be supported by community chit chats in neighbourhoods across Irvine.

Appointment of a "Digital Irvine" Project Officer to inspire and connect community, educational and business initiatives in Irvine to promote digital inclusion, participation and skills development.

### Three Towns Locality Partnership

Match funding for a feasibility study to develop a Community Development Trust in Ardrossan to capitalise on and progress the work done by a number of local organisations and initiatives to date.

### Garnock Valley Locality Partnership

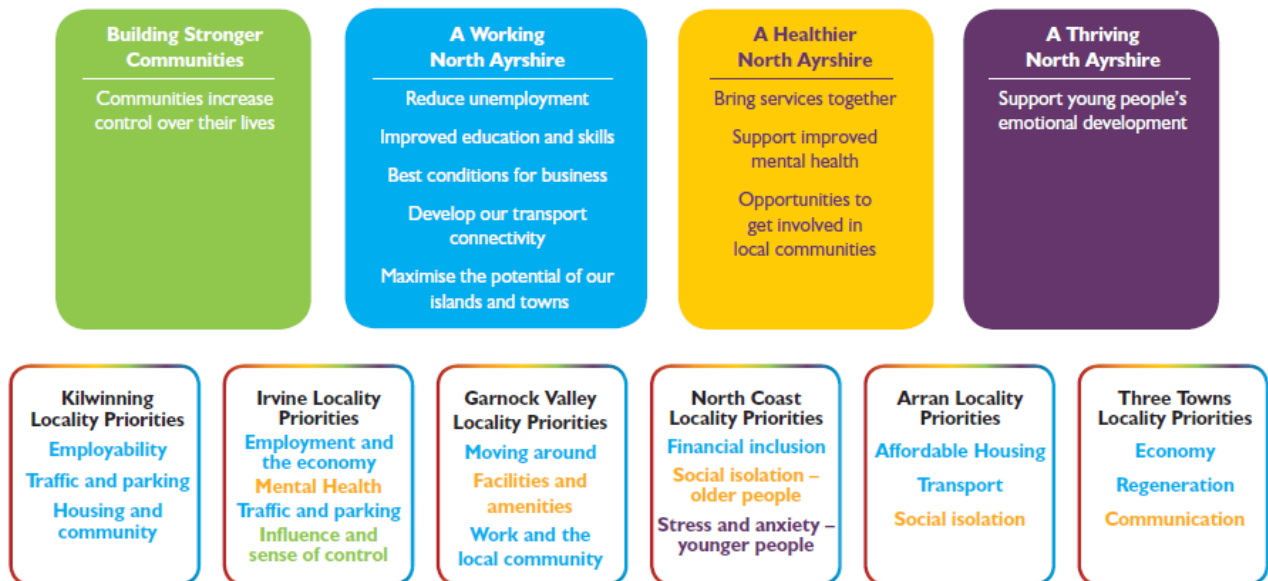
Support towards the creation of a Men’s Shed to address social isolation and to provide opportunities for community involvement, health and well-being and employment.

### North Coast Locality Partnership

Support for Cycling Without Age - trishaw bikes, one to be based on Cumbrae and the others serving the wider North Coast area. With the help of volunteers serving as trishaw pilots and outriders, the group aims to reduce the social isolation of older people and those with reduced mobility by offering trishaw rides.

### Locality Partnerships: Work across the LOIP Priorities

When developing our Local Outcomes Improvement Plan (LOIP) we consulted local people about the high level outcomes that we should be focusing as well as considering how the local priorities align to the LOIP. Their fit is shown in this diagram.



Some specific examples of how the LOIP priorities are being taken forward locally are detailed below.

## **Healthier**

Garnock Valley Men's Shed sprung from Project Kilbirnie, a local community group concerned with regeneration in Kilbirnie. Over 30 men (and women) are engaging in learning for the first time since leaving school or the workplace and the group are also inspiring others to become involved in learning and are now supporting the development of a new shed group in a neighbouring town. New learners in Kilbirnie are being targeted by engaging them in the log cabin project, teaching woodwork skills in its construction to create a space where outreach men's health initiatives can take place, including a hearing aid clinic.

## **Safer**

Multi-agency Environmental Visual Audits (EVA) have been led by Police Scotland and demonstrate the strength of the partnership in responding to crime and disorder. The audits pull together the experience and resources of; elected members, community representatives and community planning partners. During the last year, seven EVA's were undertaken across the following locations; Pennyburn, Springside, Stevenston, Kilbirnie, Beith, Ardrossan and Bourtreehill.

The Kilwinning Locality Partnership developed a traffic management plan for Kilwinning including supporting Police Scotland to identify strengths and weaknesses, reviewing town centre signage to improve pedestrian safety, and reducing the vandalism of vehicles.

## **Working**

Irvine Locality Partnership Employability subgroup are working in partnership with employability and skills promoting the Irvine employability hub and arranging satellite hubs across Irvine. The first was held at the Redburn Community Centre in August, with a staff member being provided by the Employability and Skills team. The Community Development and Employability and Skills teams have also visited community centres to identify areas of provision for further satellite hubs.

The Garnock Valley Locality Partnership has been looking into trends in relation to unemployment and receiving inputs from local organisations to better understand work underway locally. Their working groups are prioritising projects, and drawing on expertise from the wider community.

## **Thriving**

North Coast Locality Partnership received a presentation from two young members of the Largs Skate Park Community which highlighted the popularity of the park, the benefits it brings for young people in the area and the need for an upgrade. As a result, the Partnership agreed to fund the £100,000 project through the Largs Carpark Fund and the new revamped skate park was opened in April 2018 to much acclaim.

## **Locality Partnerships in 2019**

Now that we have well established ways of working we will be considering how to best measure that impact of our locality planning work, this will include thinking about social capital and how that is strengthened locally. We will continue to work with localities to address the local priorities using the Community Investment Fund as appropriate. We will support Locality Partnerships to identify new priorities as their work moves on. Membership of the groups will evolve and we are keen to strengthen the voice and role of young people in Locality Partnerships.

We have completed mapping on how inequalities are being addressed by locality work and in 2019 we will ask Locality Partnerships to consider what else can be done. We will also continue to consider the most effective links between Health and Social Care Partnership and CPP locality arrangements.